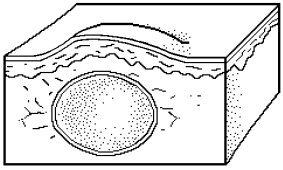
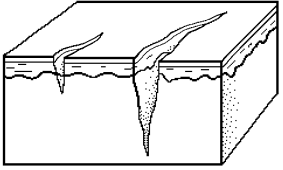


Cyst



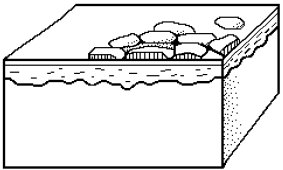
A true cyst has an epithelial lining and contains semisolid or liquid material. A pseudocyst is not lined. Examples: Epidermal cyst, pilar cyst.

Fissures



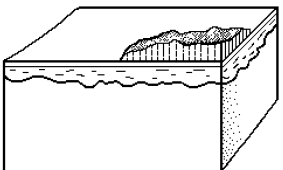
Cracks in the epidermis or into the dermis. May be microscopic to visible clefts. Fissures commonly occur in areas subject to frequent movement

Scales



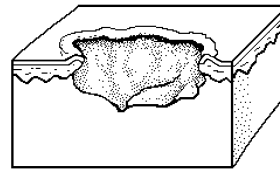
The horny layers of dead epidermis. Examples: Psoriasis, callus, lupus (chronic cutaneous).

Crust



A covering formed from serum, blood, or pus drying on the skin. Examples: Scab (eschar), impetigo (infection), varicella (chicken pox).

Ulcer



Focal loss of skin or mucous membrane.

Pressure Ulcer Staging

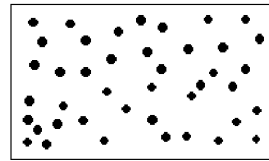
Stage 1: Defined area of persistent redness in light skin, and blue or purple color in dark skin.

Stage 2: Partial thickness loss that involves the epidermis and/or dermis.

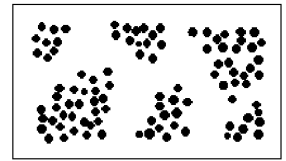
Stage 3: Full thickness loss that involves subcutaneous tissue.

Stage 4: Full thickness loss plus damage to muscle, bone or supporting structures.

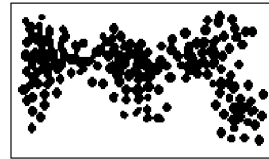
Configurations



Discrete: Individual lesions are separate and distinct.



Grouped: Lesions are clustered together.



Confluent: Lesions merge.



Linear: Lesions form a line.